

At home

In Amelia's room



Auf dieser Doppelseite findest du viele **Präpositionen**:



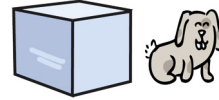
in



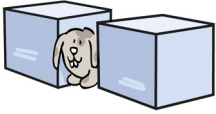
on



under



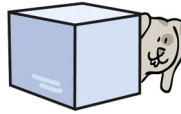
next to



between



in front of



behind

1 Find the word pairs and connect them.

Finde die Wortpaare und verbinde sie.

in between hinter in

behind under neben zwischen

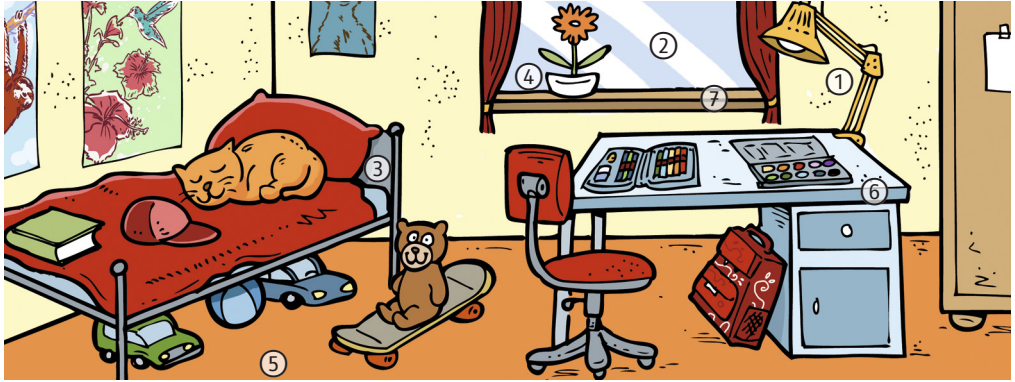
in front of on — auf vor

next to unter

2 Look at Amelia's room and find the things. Write down the correct number.

Sieh dir Amelias Zimmer an finde die Dinge. Gib die Nummer an.

- bed
- desk
- floor
- flower pot
- lamp
- window
- window sill



3 Answer the questions.

Beantworte die Fragen.

a) Is Amelia's schoolbag under the desk? Yes, it is.

b) Is the flower pot on the floor? No, it isn't.
It's on the window sill.

c) Is the book on the bed?

d) Is the cat under the bed?

.....

e) Is the pencil case on the desk?

f) Is there a ball between the two cars?

g) Is the chair next to the bed?

.....

h) Is the teddy bear behind the desk?

.....